

# Voltage Profile Improvement by STATCOM

*Digambar Bhise<sup>1</sup>, Swapnil Sawalakhe<sup>2</sup>*

<sup>1</sup>Department of Electrical Engineering, PLIT&MS,  
Buldana, INDIA  
[digambar8021@gmail.com](mailto:digambar8021@gmail.com)

<sup>2</sup>Department of Electronics & Telecommunication Engineering, PLIT&MS,  
Buldana, INDIA  
[swapnilsawalakhe2@gmail.com](mailto:swapnilsawalakhe2@gmail.com)

**Abstract:** The voltage level change in a system due to the drop in the load voltage and change in loads causes the increase in reactive power demand. If that demand not meets by the power system, bus voltage is again decreases. These decrease bus voltage cause the speedy declension of voltage at particular place. This voltage declension of particular place will cause cascading effect on nearby regions, which will further become reason for voltage collapse. In this paper FACTS [1] [2] (Flexible Alternating Current Transmission System) controller such as STATCOM (Static Compensator) is used to operate within the particular voltage limit. STATCOM use in power system for dual purposes such as adsorb the reactive power or to extract the reactive power in transmission line.

**Keywords:** Load voltage, reactive power, FACTS, STATCOM, transmission line

## 1. Introduction

During the past two decade, demand of electrical energy is increases for household purposes and industrial field. Now to fulfil this energy demand they needed the power plant, substation and transmission line [3]. In today's power grid most commonly used devices is mechanically controlled circuit breaker. Damping out of transient oscillation and handling smooth changes in load voltage quickly by power grids become difficult due to the discrete operation and large switching period. In order to supplement these drawbacks, redundancies and large operational margin are maintained to prevent the system from fault recoveries and dynamic variation. This not only increases the cost and lowers the efficiency, but also control and augments difficulty level of operation and increases the complicity of system. Recently several severe blackout take place in power grid worldwide and these revealed that traditional transmission system cannot cope with variable power flow and complicated interconnection.

Due to this, investigation become compulsory part of the stability and security studies of power grid now a day's number of approach is used to increase the security and stability of power system such as phase shifting and the reactive power compensation. Increasing demand of higher system stability, faster response of changes in system parameter and lower power losses have stimulated the developing of the era of FACTS. Due to the glorious success in the research field of advance controlled technology and power electronics switching devices, FACTS technologies [4] become the first choice in the field of transient and steady state stabilization, reactive / active power flow control and voltage control. That improves the function and operation of existing power distribution and transmission system. The achievements of the studies minimize

the operating cost, enlarge the efficiency of existing generation unit and reduce the overall fuel consumption and generation capacity.

## 2. Voltage Stability

Load stability is a major trouble in power system, which cause due to the shortage of reactive power, fault occurrence or heavy load condition at output. We can analyse voltage stability nature [5] by auditing the consumption, transmission and production of reactive power. The trouble of load stability related with the whole power system although it usually has large participation in one crucial area of the power system.

Exception to a few very special occasions, generally electrical energy is remained in a AC form at every stage such as distribution, transmission, generation and utilization. However electrical energy in the form AC has number of considerable disadvantages. One of them is inevitability of reactive power. We have to always provide reactive power along with the active power. The nature of reactive power can be lagging or leading and it does not give any contribution to energy but unavoidable part of the "total power". At the same time active power has important contribution to the energy transmission or consumption.

Almost every component of transmission system is either consumed or generated the reactive power, such as distribution, transmission and generation. In an AC system impedance of each and every circuit branch has two component reactance and resistance. Where Reactance can be consist of either capacitive or inductive load. Generally in day to day life loads used are of inductive type, where we need to compensate these loads by

lagging reactive power. It is economically feasible to provide this reactive power in load vicinity of a distribution system. In today's era of technological development every day brings the rapid changes in the field of solid state electrical switching devices. One of the such triggers is the invention of FACTS. Idea of FACTS is basically depend on power-electronic controllers. We can use the FACTS capacity to improve the value of transmission networks. As operating speed of these controllers is very high, they extend the safe operating limits of a transmission system without any risk. Day by day increasing use of the FACTS was given birth to new era of controlling systems.

### 3. STATCOM

STATCOM is classified under shunt-connected static synchronous compensator group, whose capacitive or inductive output current will be controlled without the AC voltages of system. FACTS controller is used for compensation of reactive power of system but economical point of view STATCOM is better than that of other FACTS controller such as SVC and at the same time it will overcome the technical limitations of SVC such as less transient stability, large size and high harmonic generation. The STATCOM controller composed of a solid-state voltage source converter with transformer or GTO (Gate Turn- Off) thyristor switches, other high performance semiconductor switches and a DC capacitor. In shunt converter the transformer and solid-state voltage source converter is connected in parallel with the power system.

Development in the field of semiconductor devices over the past decade improve the power handling capabilities of GTO which led to the development of utilizing electronic switching converter technology for manufacturing of controllable reactive power sources. Additionally, these technologies provide numerous benefits over the existing technologies in terms of performance and space reductions. based on the switching converter technology the solid-state shunt reactive compensation equipment is designed which will be enable by GTOs.

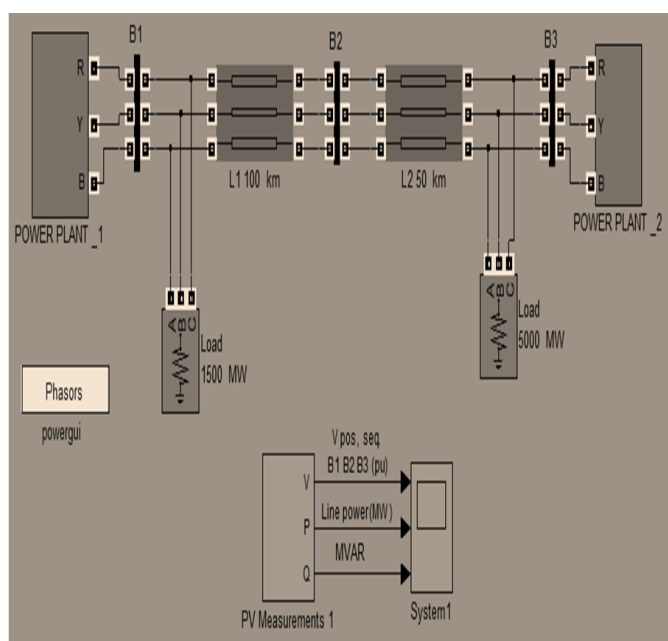


Figure 1. MATLAB simulink model without STATCOM

In Figure 1 power plant 1 and power plant 2 was connected by 3 phase transmission line, where bus1 bus2 and bus3 are connected in between this two power plant. L1 is the length of transmission line which is present between B1 and B2 and L2 is the 1 length of transmission line which is present between B2 and B3. load of 1500 MW is connected between B1 and B2 and load connected between B2 and B3 is of 5000MW.

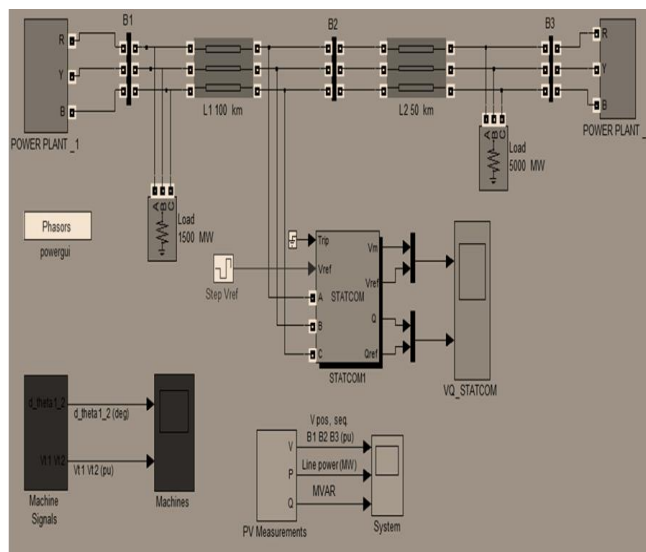


Figure 2: MATLAB simulink model with STATCOM

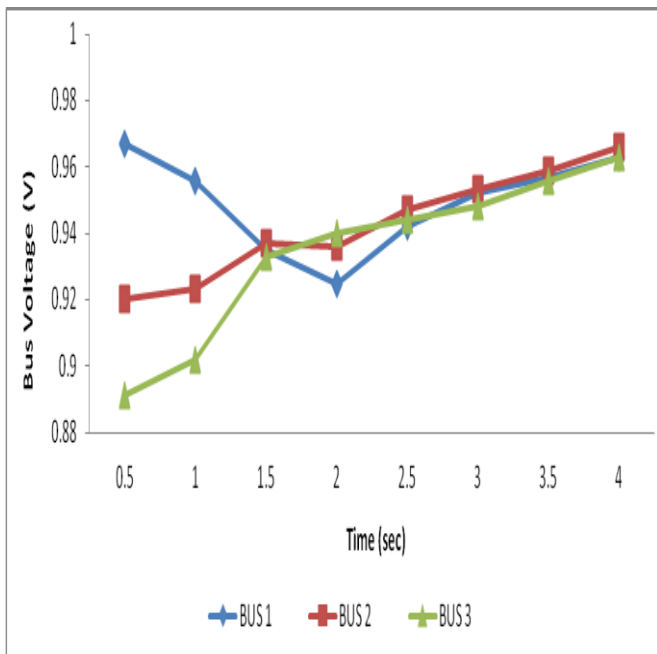
Whereas in Figure 2 we connect the STATCOM between B1 and B2 to improve the reactive power and remaining arrangement is keep same as that of Figure 1. STATCOM connected here will absorb the reactive power when it is present in excess and in case of shortage of reactive power in transmission line it will provide the same to transmission line.

### 4. Experimental Results

In this section, we give a results of experiments carried out on a Matlab sumulink platform with windows 7 as an operating system. We plot the voltage of BUS1 BUS2 and BUS3 in Figure 3 without STATCOM. At the same time in Figure 4 we plot the voltages of BUS1 BUS2 and BUS3 when we connected the STATCOM between B1 and B2.

Table 1: Voltage at BUS B1,B2 & B3 without STATCOM.

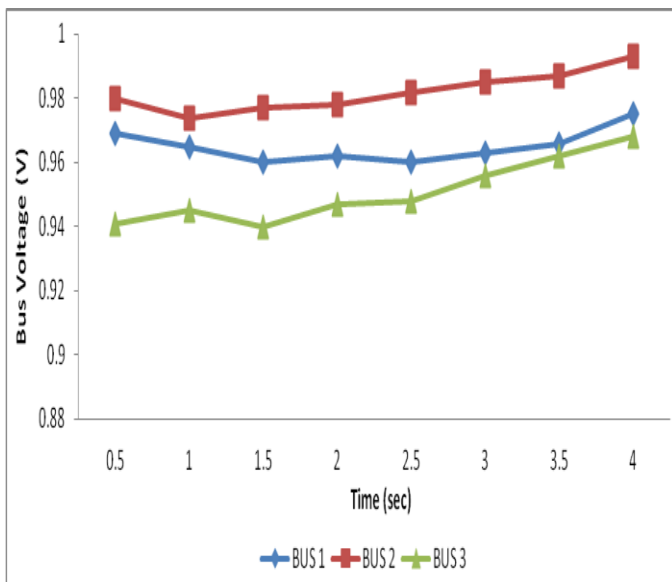
Time (sec)	Voltage of BUS1	Voltage of BUS2	Voltage of BUS3
0.5	0.967	0.92	0.891
1	0.956	0.923	0.902
1.5	0.935	0.937	0.933
2	0.925	0.936	0.94
2.5	0.942	0.947	0.944
3	0.952	0.953	0.948
3.5	0.957	0.959	0.956
4	0.963	0.966	0.963



**Figure 3:** Bus voltages without STATCOM

**Table 2:** Voltage at BUS B1,B2 & B3 with STATCOM.

Time (sec)	Voltage of BUS1	Voltage of BUS2	Voltage of BUS3
0.5	0.969	0.988	0.941
1	0.965	0.974	0.945
1.5	0.96	0.977	0.94
2	0.962	0.978	0.947
2.5	0.96	0.982	0.948
3	0.963	0.985	0.956
3.5	0.966	0.987	0.962
4	0.975	0.993	0.968



**Figure 4:** Bus voltages with STATCOM

## 5. Conclusions

We can conclude from the results that system voltage performance will be improved by STATCOM both for light load conditions and heavy load conditions. Whereas STATCOM will be helpful for obtaining variation of voltage profile in a specified limit and also useful in a receiving end calculation of reactive power management.

As for future we can place STATCOM in transmission line to improve the maximum voltage at particular location. Which will play a key role in regulating a reactive power flow of the power network and also helpful in maintaining transient stability and voltage fluctuations and also useful to ameliorate the voltage at fault time like LL, LG, LLL, LLG faults.

## References

- [1] IEEE TASK FORCE: 'Proposed terms and definitions for flexible AC transmission systems (FACTS)' *IEEE Trans. on power delivery*, Vol.12, No.4, 2005.
- [2] L.A.S. Pilotto, et al., "Determination of Needed FACTS Controllers That Increases Asset Utilization of Power Systems," IEEE PES Paper 96-WM 090-1 -PWRD, Presented at the 1996 Winter Power Meeting.
- [3] Gyugi.L, "Unified power-flow control concept of flexible AC transmission system": *IEE Proc-C*, Vol.139, No.4,2000.
- [4] N.G.Hingorani and L.Gyugyi, *Understanding FACTS, Concepts and Technology of Flexible AC Transmission Systems*, Piscatawat, NJ:IEEE Press. 2000.
- [5] K. P. Kessel and H. Glavitsch, 'Estimating the voltage stability of power system', *IEEE Trans. Power Deliv.*, PWRD-1 (1986), 346-351.

## Author Profile



**Digambar R. Bhise** received the Bachelor's degrees In Electrical Eletronics & Power Engineering from SGBAU Amravati University, and M.E from SSGMCE Shegaon in 2012. He is currently an Asst. Professor in PLITMS Buldana .His current research interests on impact of DG in power system.



**Swapnil R. Sawalake** received the Bachelor's degrees in Eletronics & Telecommunication Engineering from SGBAU Amravati University, and M.Tech from COEP Pune in 2012. He is currently an Asst. Professor in PLITMS Buldana .His current research interests include image processing, video processing and computer vision.