

# Gamma Corrected Bright Channel Filtering Based Fast Single Image De-hazing

*Navjot Kaur, Dr. Lalita Bhutani*

CSE  
SVIET  
Banur, India  
Navjot.dhillon5@gmail.com

Associate Professor/HOD(CSE)  
SVIET  
Banur, India

**Abstract:** The proposed research work is based on the concept of visibility enhancement in obtuse weather conditions like dense fog for camera captured images and then the post enhancement process to improve the quality of the data in fog effected images. As the calculation of feature defogging must meet continuous necessity, another technique is proposed, it utilizes the gamma light correction framework of the RGB image frame and joins with light variance model to astutely distinguish foggy scenes in an image. Since the foundations of mechanical work pictures by and large change gradually, median filter is utilized to get frontal affected areas. The transmission of bright channel earlier is redesigned by forefront. At that point every casing is restored straightforwardly as per the more current transmission. The defogging calculation enormously diminishes the running time and hence the processing id also reduced to one third of the base method. It accomplishes the reason for practical application of image defogging. Test results demonstrate that the calculation has a high precision on recognizing foggy scenes.

Keywords: Image Dehazing, dehaze, polarizers, CLAHE, RGB, HSV.

## Introduction

The proposed exploration work presents the cloudiness evacuation issue including the image preparing procedures most generally utilized, and a diagram of past work. Dimness is an environmental wonder where turbid media cloud the scenes. Cloudiness conveys inconveniences to numerous PC vision/design applications. This issue is scientifically equivocal: there are an endless number of arrangements given the mixed light. By what method would we be able to know which arrangement is valid? We have to answer this inquiry in fog evacuation. Equivocalness is a typical test for some PC vision issues. Regarding science, uncertainty is on account of the quantity of mathematical statements is littler than the quantity of questions. The systems in PC vision to comprehend the uncertainty can generally classified into two procedures. The haze free image is all the more outwardly pleasuring. Most PC vision calculations, from low-level image investigation

to High-level normally accept that the data image is the Radiance. The mist evacuation can create profundity data and advantage numerous vision calculations and propelled image altering. Mist can be a valuable profundity sign for scene understanding. The awful haze image can be put to great utilization. Enhancing the nature of foggy or mist image falls into two general classifications:

- 1) Adjusting complexity identified with perceivability of the image,
- 2) Enhancing neighborhood complexity speaking to points of interest of the image.

For enhancing perceivability of a foggy image, defogging techniques exist for shading images. The defogging systems perform in the spatial space for expanding the image contrast. How-ever, the spatial space alteration of the image differentiate frequently de-grades the subtle elements inside of the image on

the grounds that the difference change in spatial area can control the worldwide differentiation variety however can't consider neighborhood contrast varieties.

Climatic diffusing changes relatively to the levels of SP in the climate and consequently offer a method for measuring SP. The test of measuring climatic scrambling outwardly lies in discovering the relationship between image pixel values and the air disseminating occurring in the urban scene. The trouble of discovering this relationship lies in representing all the numerous elements that influence the pixel values. There are different variables which include: foundation sub-atomic diffusing of light, the position of the sun, the adjustment of the camera's radiometric reaction bend, camera perspective, various disseminating, vicinity of non-circular particles and the foundation scene reflectance which changes agreeing to enlightenment.

We need to image and reproduce the impacts of SP cloudiness which is both important from a PC design point of view and a natural checking angle. Most present economical systems for measuring scattered molecule (SP) don't gauge the worldwide focus . Rather, these systems measure SP levels mainly at the site of the gadget. So as to get an appraisal of the normal molecule contamination level, they join the readings of numerous gadgets more than an extensive zone. Environmental turbulence brought about by variety of refractive file along the optical transmission way can firmly influence the execution of a long-separation imaging framework .It creates geometric twisting, space and time-variation defocus obscure, and movement obscure (if the introduction time is not adequately short). A few methodologies have been proposed to tackle this issue.

### LITERATURE SURVEY

Kumari, A., Sahdev, S. Sahoo, S.K. et al.(2015)[1] clarified that, They present an effective method for defogging the images and videos based on filtering method. They first obtain an initial atmospheric scattering light by using gray scale morphological operation and refine it using guided filter. Finally the scene radiance is corrected using the visibility restoration model. The qualitative and quantitative analysis demonstrates that the proposed algorithm performs well in comparison with fast bilateral filter. Present algorithm, due to its speed and ability to

improve visibility, can be used in many systems, ranging from tracking and navigation, surveillance, consumer electronics, intelligent vehicles to remote sensing. The proposed method still can be made faster and achieve better edge enhancement ratio and gradient ratio.

Anitharani. M and Padma. S. I et al.(2013)[2] clarified that, they develop a reliable method for dehazing image and video was proposed. The goal is to achieve good dehazed images and videos with proper security at the receiver side. The image was dehazed by dark channel prior. The system based on fast single image dehazing and here the codecs used is joint photographic expert group. Then the compressed image is extended to compressed video, by using codecs H.264. Then by considering the dehazing effects before or after compression, the coding artifacts and motion estimation were investigated. Before compression produce better dehazing performance with fewer artifacts and better coding efficiency than after compression. By using these methods, the thickness of haze and haze free images and videos can be estimated directly.

Ullah, E., R. Nawaz and J. Iqbal et al.(2013)[3] clarified that, He have proposed a solitary picture dehazing procedure utilizing enhanced dull channel former. The dim channel former has been further cleaned. Both chromatic too colorless (unbiased) components of the picture are considered by the proposed model to depict the Dark Channel. Dull Channel former has been conveyed by further enhancing differentiation and shading energy of restored pictures. Enhanced Dark channel take least of immersion (1-S) and power (I) segments rather than RGB parts. Refined Dark Channel expands estimation of restored cloudiness free pictures. It keeps up shading dependability and enhances the difference. Some way or another it diminishes the pixel shading immersion.

Hitam, M. S., W. N. J. H. W. Yussof, E. A. Awalludin and Z. Bachok et al.(2013)[4] clarified that , He have shown another system called blend Contrast Limited Adaptive Histogram Equalization (CLAHE) shading models that precisely produced for submerged picture improvement. The technique works CLAHE on RGB and HSV shading models and both results are

consolidated together utilizing Euclidean standard. The focal goal of this system is to direct huge clamor presented by CLAHE so as to facilitate a progressive procedure of submerged pictures. The upgrade system viably enhances the perceivability of submerged pictures.

Long, Jiao, Zhenwei Shi and Wei Tang et al.(2012) [5] clarified that, They have introduced a quick and physical-based system. Taking into account the dim channel former, they can without much of a stretch concentrate the worldwide climatic light and generally evaluate the air cover with the dull channel of the info cloudiness picture. At that point refine the climatic shroud utilizing a low-pass Gaussian channel. Much of the time, the methodology can accomplish great results. Yet, when the pictures have thick and heterogeneous murkiness, the outcomes got will have shading twisting particularly in the splendid areas and loss of points of interest.

### Problem Definition

The base approach of defogging is a state of the art enhancement of dark channel prior processing for removing fog from foggy image data, the proposed system works well with most the foggy data. The proposed still has room for more improvement in applicability with system of small confined configurations. It is not applicable in all environments and also due to high computation for low resolution image , there is scope to improve the processing efficiency by reducing the computation time. The following can be marked as base of future work: The use of fast processing filters. Increasing visibility by restoring colour values post defogging.

### Work Method

- To select the image for defogging
- To divide the image into 3 layers (RGB)
- Find gamma values of the image frame for assessment of total light spread
- Extract median values of the filtered image
- Calculate variance of light difference in filtered image

- Use values obtained in steps 3-5 and reconstitute in the image for removing fog
- Balance the light in image using gamma correction
- Apply colour equalization in restored image
- Join All 3 layers of image

Calculate the assessment parameters like time, edge values, gradient and visibility change To assess the efficiency of the defogging system on the basis of time, edge values, gradient and visibility change

### Proposed System Flow

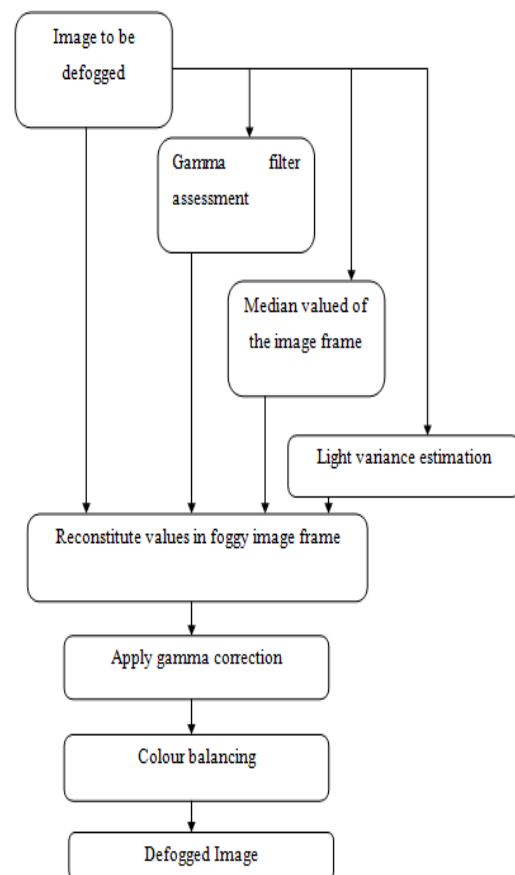


Figure 1 shows the flow diagram for Proposed approach



**Figure 2 shows the results for Proposed approach**

**Table 1 shows the results for Base and Proposed fusion approach based on TIME, AVERAGE EDGE, GRADIENT and VISIBILITY.**

PARAMETERS	BASE SYSTEM	PROPOSED SYSTEM
TIME	12.07	3.8
AVERAGE EDGE	0.05	0.16
GRADIENT	1.49	2.7

<b>VISIBILITY</b>	<b>93</b>	<b>118</b>
-------------------	-----------	------------

## REFERENCES

- [1] Anitharani. M and Padma. S. I , “ Haze Removal of Secure Remote Surveillance System” ,IOSR Journal of Engineering (IOSRJEN),pp:10-17,2013.
- [2] Blue Sky and Rayleigh Scattering”, C. R. Nave. HyperPhysics. Department of Physics and Astronomy, Georgia State University. 2005.
- [3] Chavez, P.: An improved dark-object subtraction technique for atmospheric scattering correction of multispectral data. Remote Sensing of Environment (1988).
- [4] C. Beckman, O. Nilsson, and L. Paulsson. Intraocular light scattering in vision, artistic painting, and photography. volume 33, 1994.
- [5] E. B. Goldstein. Sensation and perception. 1980.
- [6] Fattal, : Single image dehazing. SIGGRAPH, ACM Transactions on Graphics (2009).
- [7] Hitam, M. S., W. N. J. H. W. Yussof, E. A. Awalludin and Z. Bachok, "Mixture contrast limited adaptive histogram equalization for underwater image enhancement", IEEE International Conference on Computer Applications Technology (ICCAT), pp. 1-5, 2013.
- [8] He, K., Sun, J., Tang, X.: Single image haze removal using dark channel prior. In IEEE Conference on Computer Vision and Pattern Recognition (2009).

- [9] J.-P. Tarel and N. Hautière, "Fast Visibility Restoration from a Single Color or Gray Level Image", Proceedings of IEEE International Conference on Computer Vision (ICCV'09), pp.2201-2208, 2009.
- [10] J.-P. Tarel and N. Hautière, "Fast Visibility Restoration from a Single Color or Gray Level Image", Proceedings of IEEE International Conference on Computer Vision (ICCV'09), pp. 2201-2208, 2009.